

Fișa de verificare a îndeplinirii standardelor minimale  
(valabilă pentru obținerea atestatului de abilitare în Domeniul Medicină sau Domeniul Farmacie)  
(în conformitate cu O.M. 6129/20.12.2016)

Candidat Silaghi Horațiu

Nr. Crt.	Activitatea	Tipul activităților	Standarde minimale abilitare	Note asupra metodei de calcul	Gradul de îndeplinire
0	1	2	3	4	5
1.	Cercetare	a. Articole <i>in extenso</i> in reviste cotate ISI Thomson Reuters (articole în reviste cu factor de impact) în calitate de autor principal	minim 10 articole	În analiză vor fi incluse articole <i>in extenso</i> originale și reviews. Autorul sau autorii principali ai unei publicații se consideră a fi oricare dintre următorii: <ul style="list-style-type: none"> <li>a. Primul autor</li> <li>b. Autorul corespondent</li> <li>c. Alți autori, a căror contribuție este indicată explicit în cadrul publicației a fi egală cu contribuția primului autor sau a autorului corespondent</li> <li>d. Ultimul autor</li> </ul>	12 articole Criteriu îndeplinit
		<p>1. Silaghi H, Pop LA, Georgescu CE, Muntean D, Crișan D, Silaghi P, Lungu I, Nasui BA, Dulf EH, Braicu C, Berindan-Neagoe I, Silaghi CA. MicroRNA Expression Profiling-Potential Molecular Discrimination of Papillary Thyroid Carcinoma Subtypes. <i>Biomedicines</i>. 2024 Jan 9;12(1):136. doi:10.3390/biomedicines12010136 PMID: 38255241; PMCID: PMC10813560. IF = 3.9 Q1 <a href="https://www.webofscience.com/wos/woscc/full-record/WOS:001149409600001">https://www.webofscience.com/wos/woscc/full-record/WOS:001149409600001</a></p> <p>2. Silaghi H, Lozovanu V, Georgescu CE, Pop C, Nasui BA, Cătoi AF, Silaghi CA. State of the Art in the Current Management and Future Directions of Targeted Therapy for Differentiated Thyroid Cancer. <i>Int J Mol Sci</i>. 2022 Mar 23;23(7):3470. doi:10.3390/ijms23073470 PMID: 35408830; PMCID: PMC8998761. IF = 5.6 Q1 <a href="https://www.webofscience.com/wos/woscc/full-record/WOS:000781893400001">https://www.webofscience.com/wos/woscc/full-record/WOS:000781893400001</a></p> <p>3. Ilcus C, Silaghi H, Georgescu CE, Georgiu C, Ciurea AI, Nicoara SD, Silaghi CA. Molecular Pathology and Targeted Therapies for Personalized Management of Central Nervous System Germinoma. <i>J Pers Med</i>. 2021 Jul 14;11(7):661. doi:10.3390/jpm11070661 PMID: 34357128; PMCID: PMC8306901. IF = 3.508 (autor corespondent) Q2 <a href="https://www.webofscience.com/wos/woscc/full-record/WOS:000676341800001">https://www.webofscience.com/wos/woscc/full-record/WOS:000676341800001</a></p>			

4. Silaghi CA, Lozovanu V, Georgescu CE, Georgescu RD, Susman S, Năsui BA, Dobrean A, **Silaghi H**. Thyroseq v3, Afirma GSC, and microRNA Panels Versus Previous Molecular Tests in the Preoperative Diagnosis of Indeterminate Thyroid Nodules: A Systematic Review and Meta-Analysis. *Front Endocrinol* (Lausanne). 2021 May 13;12:649522.  
doi:10.3389/fendo.2021.649522  
PMID: 34054725; PMCID: PMC8155618.  
IF = 6.055  
Q1  
<https://www.webofscience.com/wos/woscc/full-record/WOS:000655031700001>
5. Georgescu RD, Dobrean A, Silaghi CA, **Silaghi H**. A virtual reality-based intervention for surgical patients: study protocol of a randomized controlled trial. *Trials*. 2021 Apr 19;22(1):289.  
doi:10.1186/s13063-021-05196-7  
PMID: 33874974; PMCID: PMC8056576.  
IF = 2.728  
Q4  
<https://www.webofscience.com/wos/woscc/full-record/WOS:000641701700003>
6. Pop C, Berce C, Ghibu S, Scurtu I, Soritau O, Login C, Kiss B, Stefan MG, Fizeșan I, **Silaghi H**, Mocan A, Crisan G, Loghin F, Mogosan C. Effects of Lycium barbarum L. Polysaccharides on Inflammation and Oxidative Stress Markers in a Pressure Overload-Induced Heart Failure Rat Model. *Molecules*.2020;25(3):466.  
doi:10.3390/molecules25030466  
PMID: 31979068; PMCID: PMC7037103  
IF = 4.412 (autor corespondent)  
Q2  
<https://www.webofscience.com/wos/woscc/full-record/WOS:000515384800036>
7. Silaghi CA, Lozovanu V, **Silaghi H**, Georgescu RD, Pop C, Dobrean A, Georgescu CE. The Prognostic Value of MicroRNAs in Thyroid Cancers-A Systematic Review and Meta-Analysis. *Cancers* (Basel). 2020 Sep 12;12(9):2608.  
doi:10.3390/cancers12092608  
PMID: 32932713; PMCID: PMC7563665.  
IF = 6.639 (prim autor cu contribuții egale)  
Q1  
<https://www.webofscience.com/wos/woscc/full-record/WOS:000580146600001>
8. Silaghi CA, **Silaghi H**, Crăciun AE, Fărcaș A, Colosi HA, Cosma DT, Pais R, Hâncu N, Georgescu CE. Age, abdominal obesity, and glycated hemoglobin are associated with carotid atherosclerosis in type 2 diabetes patients with nonalcoholic fatty liver disease. *Med Ultrason*. 2015 Sep;17(3):300-7.  
doi:10.11152/mu.2013.2066.173.cas  
PMID: 26343077; PubMed ID 26343077  
IF = 1.167 (autor corespondent)  
Q4  
<https://www.webofscience.com/wos/woscc/full-record/WOS:000361599700007>
9. Demea H, Demea S, Silaghi A, **Silaghi H**. Optochiasmatic syndrome: assessing optic nerve changes by Optical Coherence Tomography. *Acta Endocrinologica* (Bucharest). ISSN: 1841-0987; 2015; 11(3):363-370.  
doi:10.4183/aeb.2015.363  
IF = 0.235  
Q4  
<https://www.webofscience.com/wos/woscc/full-record/WOS:000358558200015>
10. Axente DD, **Silaghi H**, Silaghi CA, Major ZZ, Micu CM, Constantea NA. Operative outcomes of robot-assisted transaxillary thyroid surgery for benign thyroid disease: early experience in 50 patients. *Langenbecks Arch Surg*. 2013 Aug; 398(6):887-94. Epub 2013 May 23.  
doi:10.1007/s00423-013-1085-2  
PMID: 23700070; PubMed ID23700070  
IF = 2.160 (prim autor cu contribuții egale și autor corespondent)  
Q2  
<https://www.webofscience.com/wos/woscc/full-record/WOS:000322372500013>

11. Silaghi A, **Silaghi H**, Scridon T, Pais R, Achard V. Glucocorticoid receptors in human epicardial adipose tissue: role of coronary status. *J Endocrinol Invest*. 2012 Jul;35(7):649-54. Epub 2011 Sep 30.  
doi:10.3275/7969  
PMID: 21971518; PubMed ID 21971518  
IF = 1.654 (autor corespondent)  
Q4  
<https://www.webofscience.com/wos/woscc/full-record/WOS:000311708900007>

12. Silaghi AC, Pais R, Valea A, Mironiuc AI, **Silaghi H**. Epicardial adipose tissue and relationship with coronary artery disease. *Central European Journal of Medicine*. Jun 2011; 6(3):251-262.  
doi:10.2478/s11536-011-0011-7  
IF = 0.312  
Q4  
<https://www.webofscience.com/wos/woscc/full-record/WOS:000289298000001>

<b>b. (ISI) Factor cumulată de Impact autor principal (FCIAP)</b>	minim 10	O revistă cotate ISI este o revistă pentru care Thomson Reuters calculează și publică factorul de impact în „Journal Citation Reports”. Factorul cumulată de Impact va fi calculat pentru articolele la care candidatul este autor principal (FCIAP=suma factorilor de impact ai articolelor publicate de autor în calitate de autor principal în reviste cotate ISI)	<b>38.37</b> <b>Criteriu îndeplinit</b>
---	----------	--	--

**Calcul FCIAP = 3.9(1) + 5.6(2) + 3.508(3) + 6.055(4) + 2.728(5) + 4.412(6) + 6.639(7) + 1.167(8) + 0.235(9) + 2.160(10) + 1.654(11) + 0.312 (12) = 38.37**

<b>c. Articole in extenso in reviste cotate ISI Thomson Reuters în calitate de coautor</b>	minim 5 articole		<b>9 articole</b> <b>Criteriu îndeplinit</b>
--	------------------	--	---

1. Nasui BA, Ungur RA, Nasui GA, Popescu CA, Hofer AM, Dersidan S, Popa M, **Silaghi H**, Silaghi CA. Adolescents' Lifestyle Determinants in Relation to Their Nutritional Status during COVID-19 Pandemic Distance Learning in the North-Western Part of Romania-A Cross-Sectional Study. *Children* (Basel). 2023 May 24; 10(6):922.  
doi:10.3390/children10060922  
PMID: 37371154; PMCID: PMC10297466.  
IF = 2.4  
Q2  
<https://www.webofscience.com/wos/woscc/full-record/WOS:001014323200001>

2. Lozovanu V, Georgescu CE, Florescu LM, Georgiu C, **Silaghi H**, Fratea A, Silaghi CA. Xanthogranuloma of the Sellar Region: A Comprehensive Review of Neuroimaging in a Rare Inflammatory Entity. *J Pers Med*. 2022 Jun 8;12(6):943.  
doi:10.3390/jpm12060943  
PMID: 35743728; PMCID: PMC9225214.  
IF = 3.4  
Q2  
<https://www.webofscience.com/wos/woscc/full-record/WOS:000819057500001>

3. Danku AE, Dulf EH, Banut RP, **Silaghi H**, Silaghi CA. Cancer Diagnosis With the Aid of Artificial Intelligence Modeling Tools. *IEEE Access*, vol. 10, pp. 20816-20831, 2022.  
doi:10.1109/ACCESS.2022.3152200  
IF = 3.9  
Q2  
<https://www.webofscience.com/wos/woscc/full-record/WOS:000764065000001>

4. Nasui BA, Toth A, Popescu CA, Penes ON, Varlas VN, Ungur RA, Ciuciuc N, Silaghi CA, **Silaghi H**, Pop AL. Comparative Study on Nutrition and Lifestyle of Information Technology Workers from Romania before and during COVID-19 Pandemic. *Nutrients*. 2022 Mar 12;14(6):1202.  
doi:10.3390/nu14061202  
PMID: 35334858; PMCID: PMC8953937.  
IF = 5.9  
Q1  
<https://www.webofscience.com/wos/woscc/full-record/WOS:000774391000001>

5. Azevedo ZV, Silaghi CA, Maurel T, **Silaghi H**, Ratziu V, Pais R. Impact of Sarcopenia on the Severity of the Liver Damage in Patients With Non-alcoholic Fatty Liver Disease. *Front Nutr*. 2022 Jan 17;8:774030.  
doi:10.3389/fnut.2021.774030  
PMID: 35111794; PMCID: PMC8802760.  
IF = 5  
Q2  
<https://www.webofscience.com/wos/woscc/full-record/WOS:000749849100001>

6. Năsui BA, Ungur RA, Talaba P, Varlas VN, Ciuciuc N, Silaghi CA, **Silaghi H**, Opre D, Pop AL. Is Alcohol Consumption Related to Lifestyle Factors in Romanian University Students? *Int J Environ Res Public Health*. 2021 Feb 13;18(4):1835.  
doi:10.3390/ijerph18041835  
PMID: 33668631; PMCID: PMC7918722.  
IF = 4.614  
Q1  
<https://www.webofscience.com/wos/woscc/full-record/WOS:000623614100001>

7. Cătoi AF, Pârva AE, Mironiuc A, **Silaghi H**, Pop ID, Andreicuț AD. Ultra-Early and Early Changes in Bile Acids and Insulin After Sleeve Gastrectomy Among Obese Patients. *Medicina (Kaunas)*. 2019 Nov 22;55(12):757.  
doi:10.3390/medicina55120757  
PMID: 31766784; PMCID: PMC6955910  
IF = 1.205  
Q3  
<https://www.webofscience.com/wos/woscc/full-record/WOS:000505737800011>

8. Valea A, Silaghi CA, Ghervan CMV, **Silaghi H**, Florea M, Simionescu B, Bizo A, Cornean RE. Morbid Child Obesity with Possible Rohhadnet=Rohhad Syndrome. Case Report. *Acta Endocrinologica (Bucharest)*. ISSN: 1841-0987; 2014 Jul-Sep; 10(3):515-524.  
doi:10.4183/aeb.2014.515  
IF = 0.268  
Q4  
<https://www.webofscience.com/wos/woscc/full-record/WOS:000339535700020>

9. Pais R, Silaghi H, **Silaghi AC**, Rusu ML, Dumitrascu DL. Metabolic syndrome and risk of subsequent colorectal cancer. *World J Gastroenterol*. 2009 Nov 7; 15(41):5141-8.  
doi:10.3748/wjg.15.5141  
PMID: 19891012; PMCID: PMC2773892.  
IF = 2.092  
Q3  
<https://www.webofscience.com/wos/woscc/full-record/WOS:000271628000003>

<b>d. Index Hirsch</b>	minim 6	Va fi luat în considerare Indexul Hirsch calculat utilizând ISI Web of Science, Core Collection, Thomson Reuters	<b>IH = 12</b> <b>Criteriu îndeplinit</b>
------------------------	---------	--	--

Search > Citation Report: Marked List: Unfiled

### Citation Report

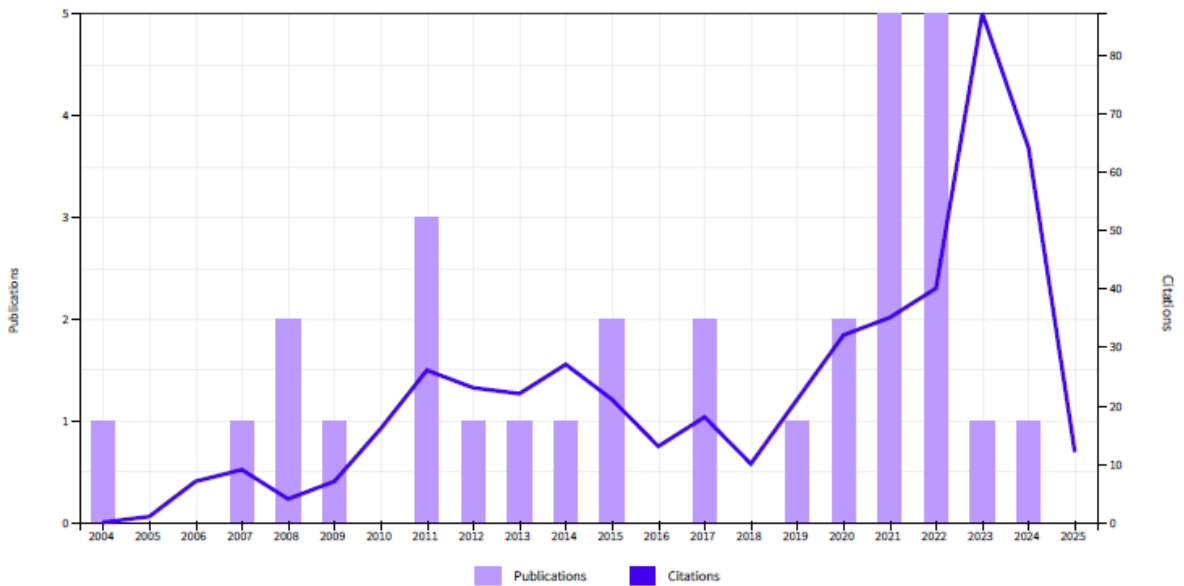
Analyze Results

Export Full Report

<b>Publications</b> 30 Total From 1975 to 2025	<b>Citing Articles</b> 488 Analyze Total 484 Analyze Without self-citations	<b>Times Cited</b> 495 Total 490 Without self-citations	16.5 Average per item	12 H-Index
---	---	---	--------------------------	---------------

#### Times Cited and Publications Over Time

DOWNLOAD



Cluj - Napoca,  
20.03.2025

Semnatura